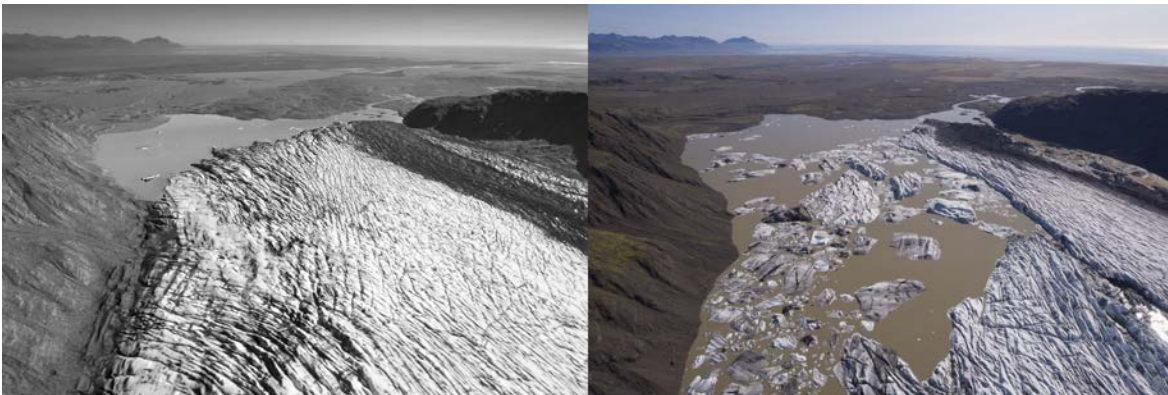


Flugsýn af tungu Skálafellsjökuls 1989 og 2019. Myndirnar byggja á loftmyndum sem teknar voru úr flugvél 1989 af Landmælingum Íslands, úr flygildi 2019 og landlíkönum sem reiknuð voru á grundvelli myndanna og sýna vel lækkun yfirborðs jökulsins á 30 ára tímabili. – *Bird's-eye views of the tongue of Skálafellsjökull in 1989 and 2019. The views are produced from aerial photographs taken from an aircraft in 1989 by the National Land Survey of Iceland and an unmanned aerial vehicle in 2019 and show well the lowering of the glacier surface over the 30-year period.* Myndvinnsla/Imagery: Kieran Baxter.



Flugsýn af tungu Heinabergsjökuls 1982 og 2018. Myndirnar byggja á loftmyndum sem teknar voru úr flugvél 1982 af Landmælingum Íslands, úr flygildi 2018 og landlíkönum sem reiknuð voru á grundvelli myndanna og sýna vel breytingar á sporðinum og stækkun lónsins á 36 ára tímabili. – *Bird's-eye views of the tongue of Heinabergsjökull in 1982 and 2018. The views are produced from aerial photographs taken from an aircraft in 1982 by the National Land survey of Iceland and an unmanned aerial vehicle in 2018 and show well the changes of the terminus and enlarging glacier lake over the 36-year period.* Myndvinnsla/Imagery: Kieran Baxter.